

Appendix 2

CONCEPTUAL LANDSCAPE PROPOSAL

FUK CHEUNG STREET

ARGYLE STREET

FU NING STREET

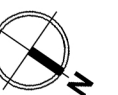
G/F LANDSCAPE MASTER PLAN

TOTAL G/F AREA = 1,185.16 m²
TOTAL PLANTING AREA = 100.48 m²

LEGEND

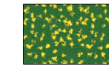
-  PROPOSED TREES
-  LAWN
-  PROPOSED PAVING (BAMBOO PATTERN)
-  EXISTING TREES
-  SITE BOUNDARY

ENTRANCE
CANOPY



0 1 2 3 4 5 10m

LEGEND

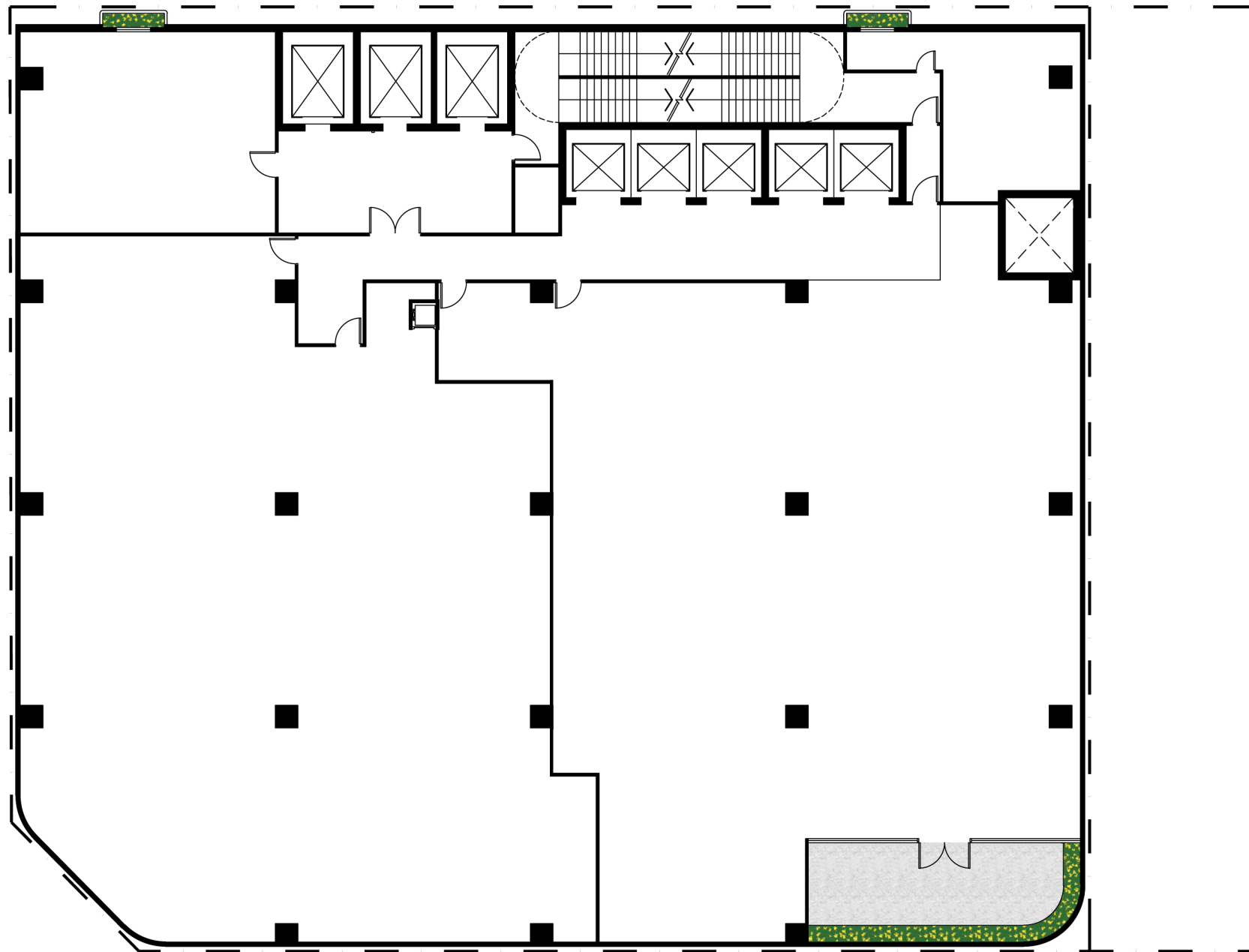


SHRUB PLANTING



BALCONY PAVING

— — SITE BOUNDARY

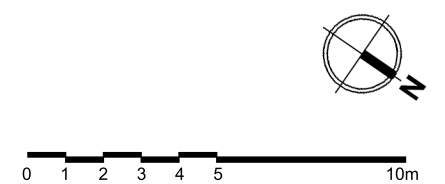


6/F LANDSCAPE MASTER PLAN

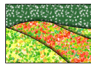
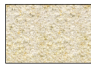


TOTAL 6/F AREA = 1,192.86 m²

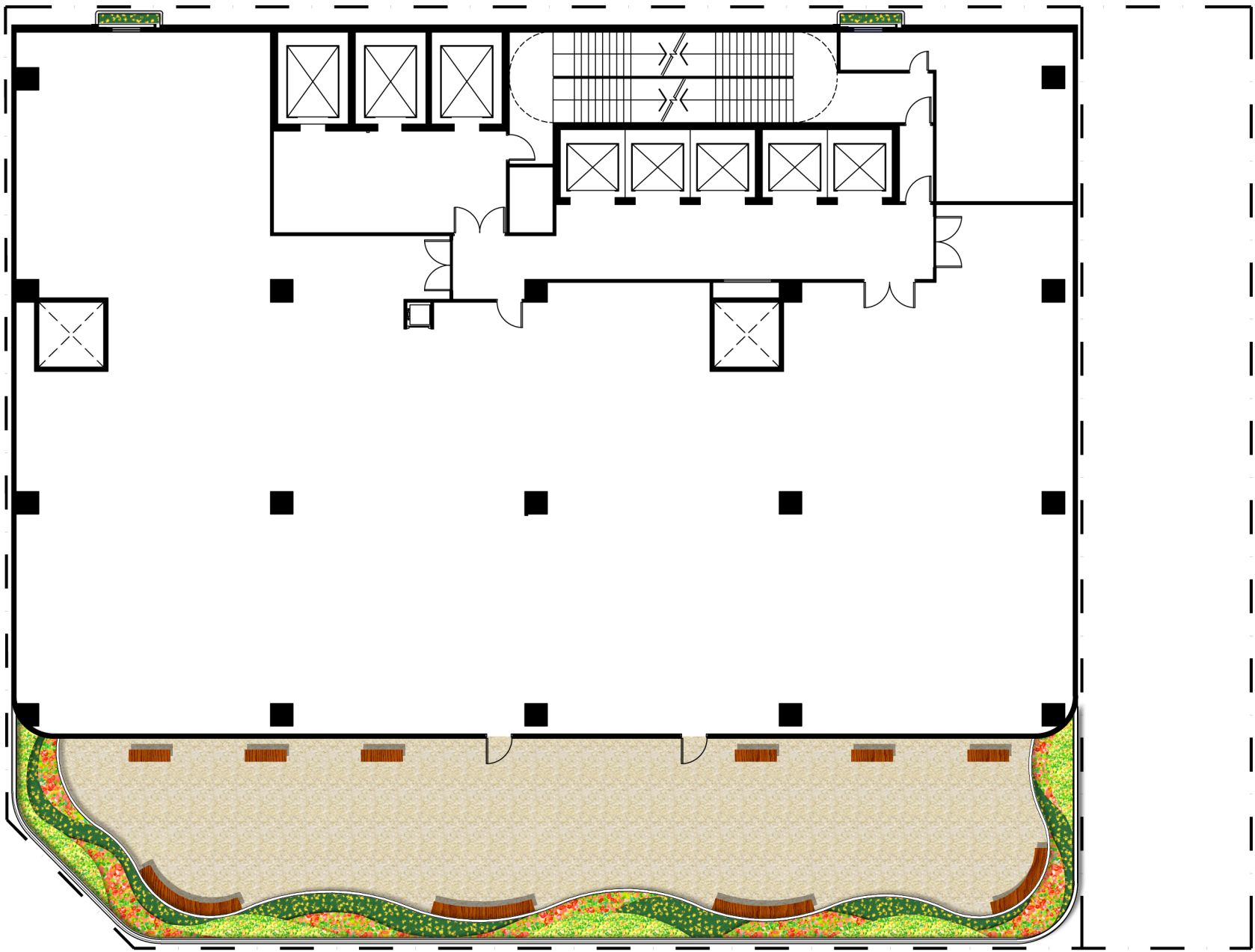
TOTAL PLANTING AREA = 8.67 m² (including 1.6m² Planter Box Areas)

*Remarks: Planter Boxes are provided on M/F to 8/F



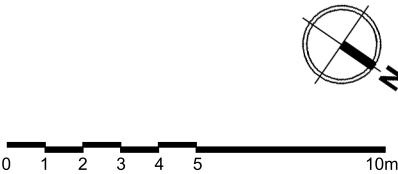
LEGEND

-  PROPOSED FLOWERING SHRUB PLANTING
-  PODIUM DECK PAVING
-  OUTDOOR SEATING
-  SITE BOUNDARY

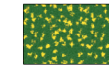


8/F LANDSCAPE MASTER PLAN

TOTAL 8/F AREA = 1,192.86 m²
TOTAL PLANTING AREA = 56.79 m² (including 1.6m² Planter Box Areas)
*Remarks: Planter Boxes are provided on M/F to 8/F



LEGEND

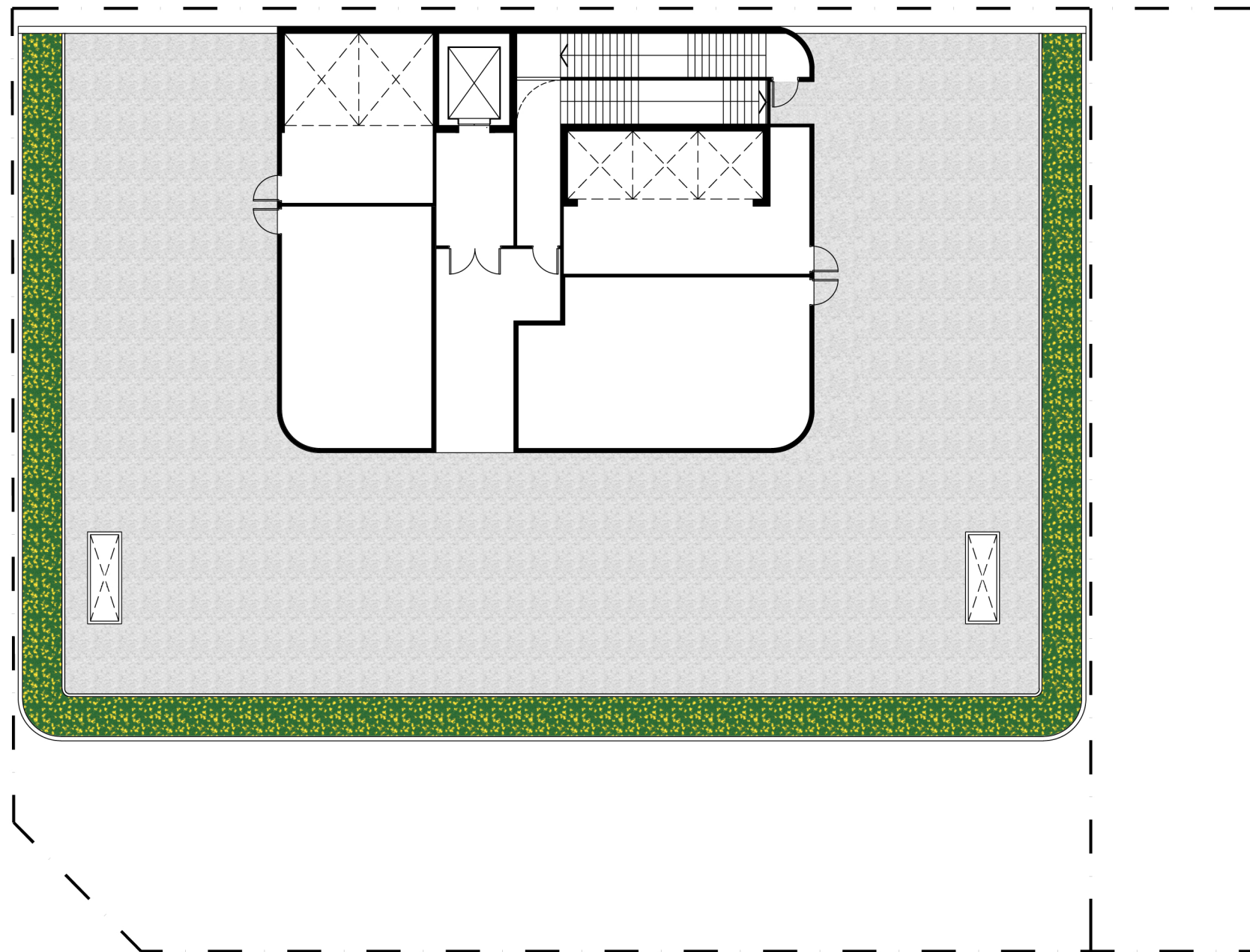


SHRUB PLANTING



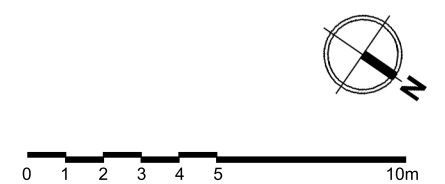
RF PAVING

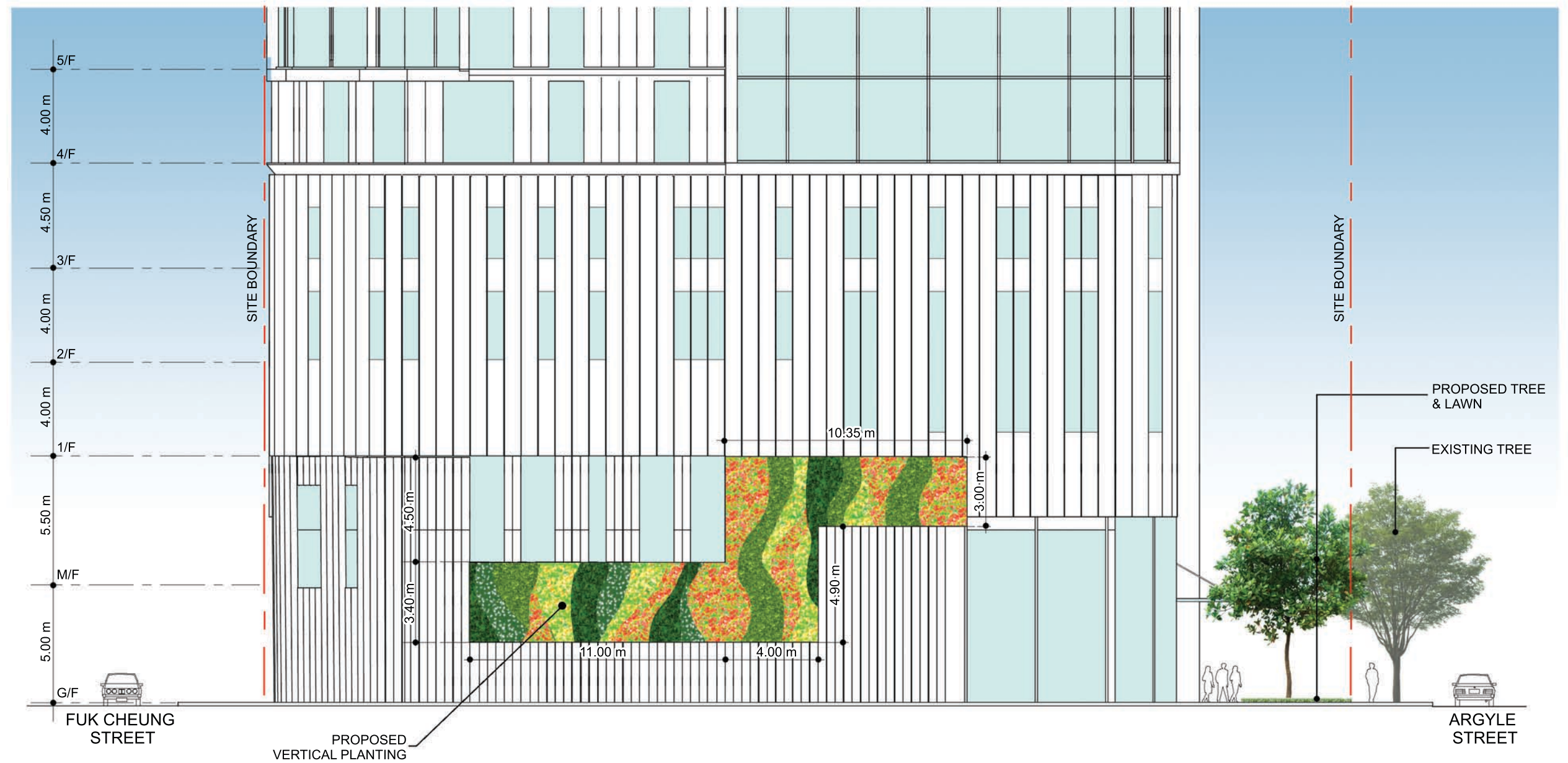
— — SITE BOUNDARY



RF LANDSCAPE MASTER PLAN

TOTAL RF AREA = 927.86 m²
TOTAL PLANTING AREA = 117.21 m²





ELEVATION ALONG FU NING STREET SHOWING VERTICAL PLANTING

TOTAL VERTICAL PLANTING AREA = 88.05 m²





ELEVATION VIEW FROM HOOVER COURT SHOWING VERTICAL PLANTERS

TOTAL PLANTER BOX AREA = 14.40m²



Common Greenery Calculation in accordance with PNAP APP-152**Required Common Greenery**

Site Area (sqm)	1463
Minimum Common Greenery (sqm)	$1463 \times 20\% = 292.60$
Minimum Common Greenery at Primary Zone (sqm)	$1463 \times 10\% = 146.30$
Maximum Accountable Greenery Feature (sqm)	$292.60 \times 30\% = 87.78$

Provided Common Greenery

Uncovered Lawn at Primary Zone (G/F) (sqm):	100.48	
Total Vertical Green Wall	88.05	(>87.78)
Total Common Greenery at Primary Zone (G/F-1/F,VG)(sqm):	$87.78 + 100.48 = 188.26$ $188.26 / 1463 = 12.87\%$	
Common Greenery at Other Areas (2/F - R/F) (sqm)	179.47	
Total Common Greenery (sqm):	$179.47 + 188.26 = 367.73$	(>292.60)
Common Greenery Ratio (sqm):	$367.73 / 1463 = 25.13\%$	